



Service Bulletin

SB 19-01 R2

Issued: 02/26/19

BRS 901 and 601 Igniter Rocket Base Inspection

Compliance

Mandatory: BRS considers this service bulletin mandatory. The BRS system is deemed inoperable until compliance with this Service Bulletin has been met.

Effectivity

BRS systems with 901 rockets and 601 rockets with lot numbers shown in the table below are affected

Lot Numbers of 901 Rockets That Are Affected by This Bulletin	
26538	28023

Lot Numbers of 601 Rockets That Are Affected by This Bulletin			
27412	27753	28017	28830

Purpose

Some airplanes may exhibit a condition where upon further inspection the BRS rocket motor may not be fully seated or retained. This service Bulletin will explain how to inspect for the presence of this condition.

Description

This Service Bulletin provides inspection instructions and what to do when the inspection reveals a non-conforming part.

Warranty Information

N/A

Manpower Requirements

1.0 man-hours

Weight and Balance

N/A

Accomplishment Instructions

1 REFERENCES

The following documents supplement these instructions:		
Source	Document №	Description
BRS	020008-IC	CTSW ICA
BRS	9005IC-02	BRS-182 ICA
BRS	019815-02	BRS-172 ICA
BRS	020008-PM	PIM CTSW
BRS	9005IM-03	PIM BRS 182
BRS	9004IM-03	PIM BRS 172

2 REQUIRED TOOLS

1. Allen Wrench 9/64"
2. Standard Philips Screwdriver
3. Measuring Caliper
4. Measuring Ruler

3 MATERIAL AND PART PREPARATION

1. Parts are to be visually inspected for defects (nicks, burrs, etc.).
2. Parts are to be free of contamination and debris (oil, dirt, etc.). Operators should assure that their hands are clean before handling parts.

No.	Part
1	Thread Locker

4 REMOVE ROCKET ASSEMBLY FROM MOUNT

**REFERENCE REMOVAL
INSTRUCTIONS**

1.5. Consult reference table 1 to find your appropriate aircraft specific instructions for continued airworthiness. Use these instructions to remove the activation handle assembly from igniter assembly. Once removed, follow instructions to remove rocket from rocket base.

Reference Table 1

The following documents supplement these instructions:

Source	Document №	Description
BRS	020008-IC	CTSW ICA
BRS	9005IC-02	BRS-182 ICA
BRS	019815-02	BRS-172 ICA
BRS	020008-PM	PIM CTSW
BRS	9005IM-03	PIM BRS 182
BRS	9004IM-03	PIM BRS 172

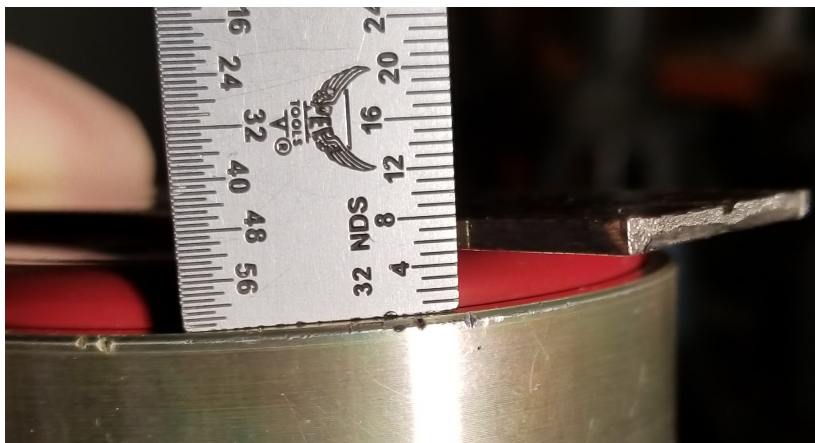
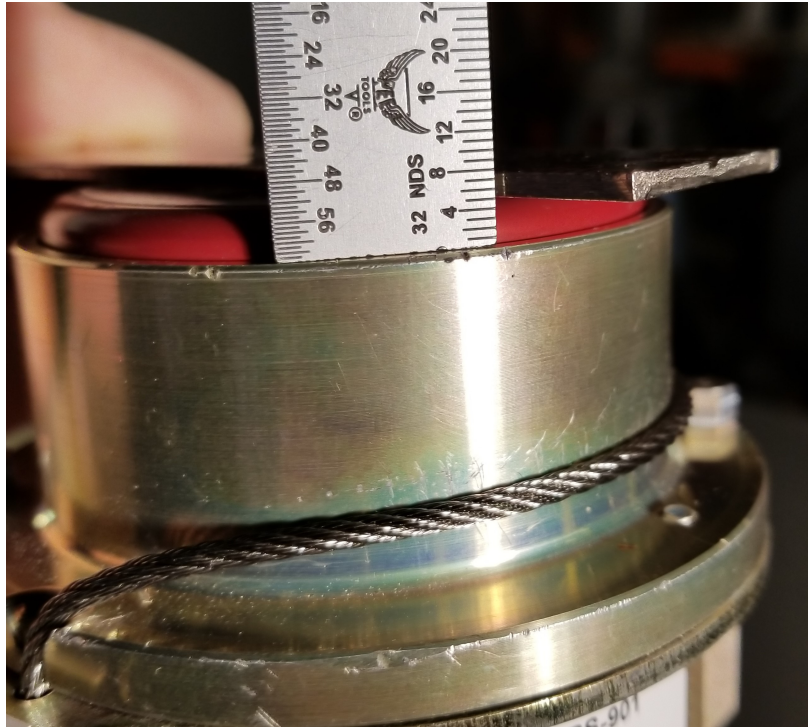
5 INSPECTION PROCESS

Rocket Protrusion

1.6. Lay a flat edge over the top of the motor case. With a 32nds" measuring ruler, confirm that the rocket motor case does not protrude past the top edge of the pickup collar more than $5/32''$.

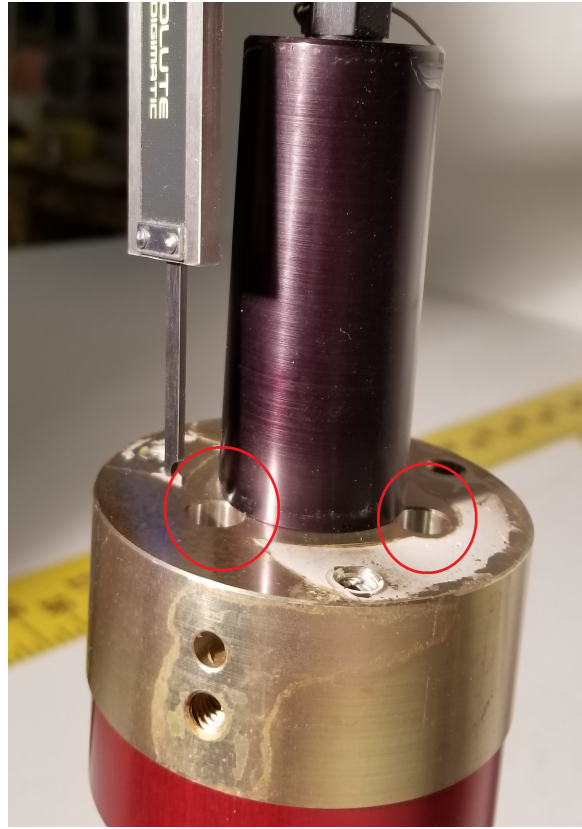
1.7. If your measurement is outside of the tolerance, please immediately contact BRS Aerospace with your results.

1.8. If you are within tolerance, move on to step 1.9



Nylon Screw Depth Check

- 1.9. Locate the 3 holes in the bottom of the rocket base, where the nylon retention screws are located



- 1.10. With a measuring caliper, confirm screw depth in hole. The measurement should read 0.59", +/- 0.010".
- 1.11. If your measurement is outside of the tolerance, please immediately contact BRS Aerospace with your results



6 Re-Installation

1.12. Only if BOTH of your measurements from the previous steps are within tolerance, proceed to the reinstallation process. The applicable instructions will be referenced in your aircraft specific PIM.

Reference Table 1

The following documents supplement these instructions:		
Source	Document №	Description
BRS	020008-IC	CTSW ICA
BRS	9005IC-02	BRS-182 ICA
BRS	019815-02	BRS-172 ICA
BRS	020008-PM	PIM CTSW
BRS	9005IM-03	PIM BRS 182
BRS	9004IM-03	PIM BRS 172

Ballistic Recovery Systems, Inc.
Compliance Response Form for Service Bulletin 19-01-R2 BRS 901/601 Igniter Rocket Base Inspection

It is necessary that BRS maintain a record of all airplanes that are serviced in compliance with the requirements of this Service Bulletin. BRS Inc. requires that this Service Bulletin Compliance Response Form be completed and returned to the address below.

Airplane Information

Airplane Registration ("N") Number: _____

Acft. Serial Number: _____

BRS Rocket Lot Number: _____

Owners Name: _____

Address: _____

Phone: _____

Email: _____

Hobbs or Tach. Hours: _____

Service Facility Information

Service Facility Name: _____

Address: _____

Date of Service: _____ Phone: _____

Compliance Information

This BRS Service Bulletin was complied with on the referenced serial number airplane at the listed airplane hours.

Result of Inspection: (Check one) In Tolerance Out of Tolerance

Signature: _____

Printed Name: _____

Title: _____ A/P or I/A Number: _____

Comments:

Return form to:

BRS, Inc.
Customer Service Manager (dkuefler@brsaerospace.com)
380 Airport Road
South St. Paul, Minnesota 55075

END OF DOCUMENT